



- Preliminary Specification  
 Final Specification

Module	17.0" SXGA Color TFT-LCD
Model Name	FT170-EDS03 V.5 (G170EG01 V.1)

<b>Customer</b>  _____	<b>Date</b>  _____	<b>Checked &amp; Approved by</b>  <b>Michael Yeh</b> _____	<b>Date</b>  <b>2011/04/24</b> _____
<b>Approved by</b>  _____	_____	<b>Prepared by</b>  _____	_____
Note: This Specification is subject to change without notice.			



## Contents

<b>1. Handling Precautions .....</b>	<b>4</b>
<b>2. General Description .....</b>	<b>5</b>
2.1 Display Characteristics .....	5
2.2 Optical Characteristics .....	6
<b>3. Functional Block Diagram .....</b>	<b>9</b>
<b>4. Absolute Maximum Ratings .....</b>	<b>10</b>
4.1 TFT LCD Module .....	10
4.2 Backlight Unit .....	10
4.3 Absolute Ratings of Environment.....	10
<b>5. Electrical characteristics .....</b>	<b>11</b>
5.1 TFT LCD Module .....	11
5.2 Backlight Unit .....	13
<b>6. Signal Characteristic .....</b>	<b>14</b>
6.1 Pixel Format Image.....	14
6.2 Signal Description .....	15
6.3 The Input Data Format .....	16
6.4 Interface Timing .....	18
6.5 Power ON/OFF Sequence.....	19
<b>7. Connector &amp; Pin Assignment .....</b>	<b>20</b>
7.1 TFT LCD Module .....	20
7.2 Backlight Unit .....	20
7.3 LED Driver Board .....	21
<b>8. Mechanical Characteristics .....</b>	<b>22</b>
<b>9. Reliability Test Criteria .....</b>	<b>25</b>



## Record of Revision

Version & Date	Page	Old Description	New Description	Remark
V.0 2011/04/24	All	First Edition		



## 1. Handling Precautions

- 1) Since front polarizer is easily damaged, pay attention not to scratch it.
- 2) Be sure to turn off power supply when inserting or disconnecting from input connector.
- 3) Wipe off water drop immediately. Long contact with water may cause discoloration or spots.
- 4) When the panel surface is soiled, wipe it with absorbent cotton or other soft cloth.
- 5) Since the panel is made of glass, it may break or crack if dropped or bumped on hard surface.
- 6) Since CMOS LSI is used in this module, take care of static electricity and insure human earth when handling.
- 7) Do not open or modify the Module Assembly.
- 8) Do not press the reflector sheet at the back of the module to any directions.
- 9) In case if a Module has to be put back into the packing container slot after once it was taken out from the container, do not press the center of the LED light bar edge. Instead, press at the far ends of the LED light bar edge softly. Otherwise the TFT Module may be damaged.
- 10) At the insertion or removal of the Signal Interface Connector, be sure not to rotate nor tilt the Interface Connector of the TFT Module.
- 11) After installation of the TFT Module into an enclosure, do not twist nor bend the TFT Module even momentary. At designing the enclosure, it should be taken into consideration that no bending/twisting forces are applied to the TFT Module from outside. Otherwise the TFT Module may be damaged.
- 12) Small amount of materials having no flammability grade is used in the LCD module. The LCD module should be supplied by power complied with requirements of Limited Power Source (IEC60950 or UL1950), or be applied exemption.



## 2. General Description

This specification applies to the 17 inch Color TFT-LCD Module

The display supports the SXGA+ (1280(H) x 1024(V)) screen format and 16.7M colors (RGB 6-bits+Hi-FRC data). All input signals are 2 Channel LVDS interface compatible.

### 2.1 Display Characteristics

The following items are characteristics summary on the table under 25 °C condition:

Item	Unit	Specification
Screen Diagonal	mm	432 (17.0")
Active Area	mm	337.920(H)*270.336(V)
Pixel H x V	mm	1280*3(RGB) * 1024
Pixel Pitch	mm	0.264(per one triad) x0.264
Pixel Arrangement		RGB Vertical Stripe
Display Mode		Normally White
White Luminance	cd/m <sup>2</sup>	1000
Contrast Ratio		800:1(Typ)
Optical Response Time	msec	30(Typ)
Nominal Input Voltage VDD	volt	+5.0(Typ)
Power Consumption (VDD line + LED line)	watt	24.57W(Typ 5.25+19.32) With LED driver, all black pattern)
Weight	Grams	1350 Typ
Physical Size(HxVxD)	mm	358.5(H) x 296.5(V) x 18.0(D) Max
Electrical Interface		Dual channel LVDS
Support Color		16.7M colors(RGB 6bist+Hi-FRC data)
Temperature Range Operation Storage(Non Operation)	°C	-30~+70°C (Panel surface temperature) -30~+85°C (Panel surface temperature)
ROHS Compliance		ROHS Compliance



## 2.2 Optical Characteristics

The optical characteristics are measured under stable conditions at 25 °C (Room Temperature):

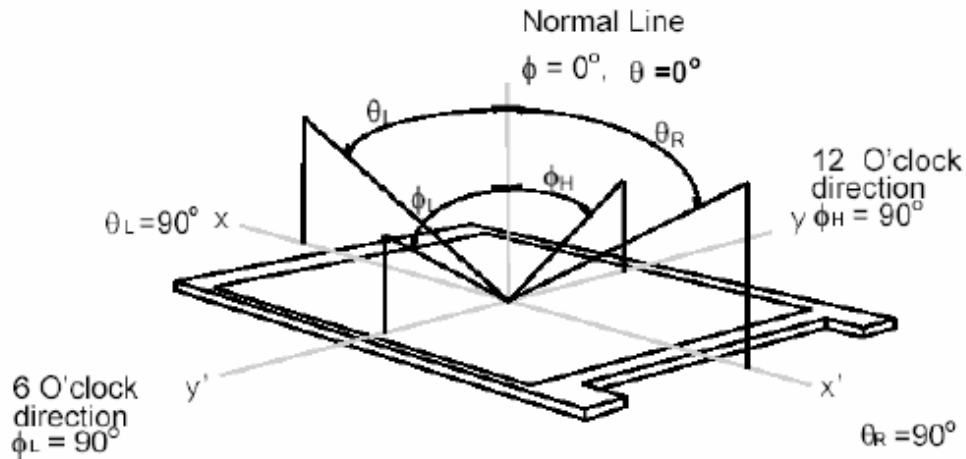
Item	Unit	Conditions	Min.	Typ.	Max.	Note
Viewing Angle	[degree]	Horizontal (Right) CR = 10 (Left)	70 70	80 80	-	1
		Vertical (Up) CR = 10 (Down)	50 70	60 80	-	
Luminance Uniformity	[%]	9 Points	75	80	-	2, 3
Optical Response Time	[msec]	Rising	-	20	25	4, 6
		Falling	-	10	15	
		Rising + Falling	-	30	40	
Color / Chromaticity Coordinates (CIE 1931)		Red x	0.598	0.648	0.698	4
		Red y	0.289	0.339	0.389	
		Green x	0.273	0.323	0.373	
		Green y	0.563	0.613	0.663	
		Blue x	0.093	0.143	0.193	
		Blue y	0.020	0.070	0.120	
		White x	0.263	0.313	0.363	
		White y	0.279	0.329	0.379	
White Luminance (At LED= 00mA)	[cd/m <sup>2</sup> ]		900	1000	-	4
Contrast Ratio			600	800	-	4
Cross Talk (At 75Hz)	[%]		-	-	1.5	5
Flicker	[dB]		-	-	-20	7
Color Gamut	[%]			72		

Optical Equipment: BM-5A, BM-7, PR880, or equivalent

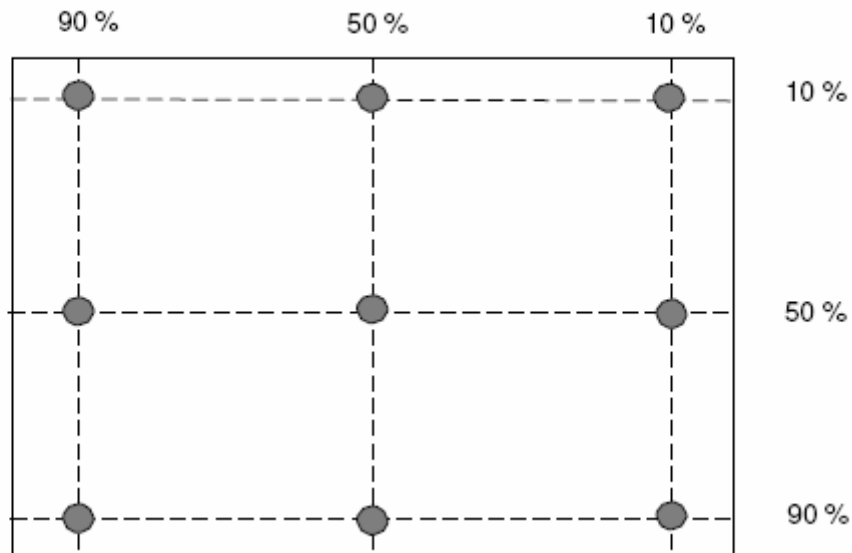


Note 1: Definition of viewing angle

Viewing angle is the measurement of contrast ratio = 10, at the screen center, over a 180 °horizontal and 180 °vertical range (off-normal viewing angles). The 180 °viewing angle range is broken down as follows; 90 °(è) horizontal left and right and 90 °(Ö) vertical, high (up) and low (down). The measurement direction is typically perpendicular to the display surface with the screen rotated about its center to develop the desired measurement viewing angle.



Note 2: 9 points position



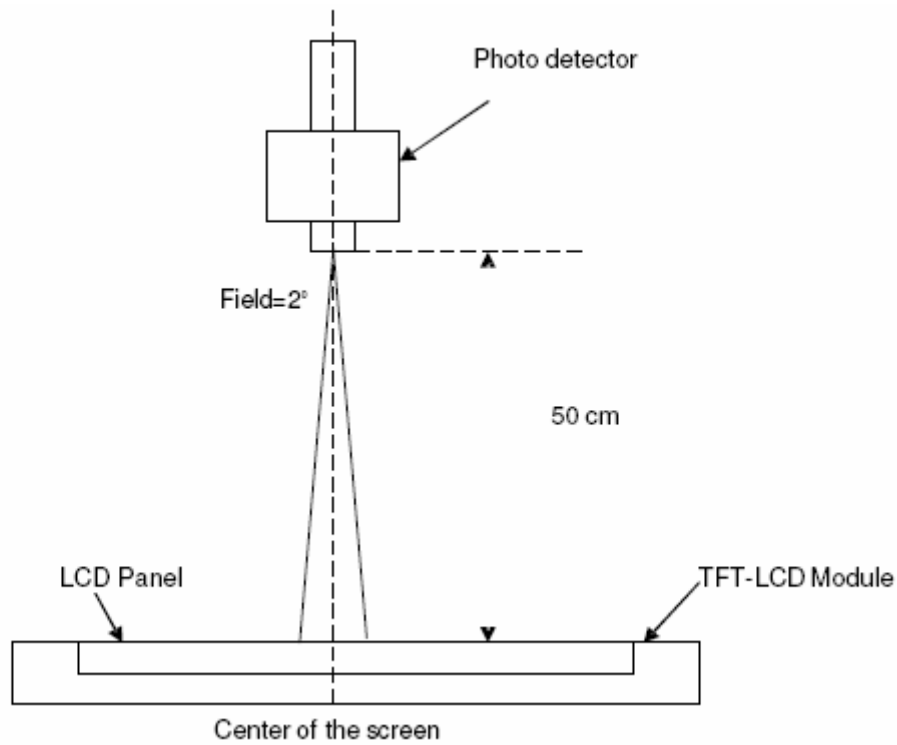
Note 3: The luminance uniformity of 9 points is defined by dividing the maximum luminance values by the minimum test point luminance

$$\delta_{W9} = \frac{\text{Minimum Luminance of 9 points}}{\text{Maximum Luminance of 9 points}}$$



Note 4: Measurement method

The LCD module should be stabilized at given temperature for 30 minutes to avoid abrupt temperature change during measuring. In order to stabilize the luminance, the measurement should be executed after lighting Backlight for 30 minutes in a stable, windless and dark room.



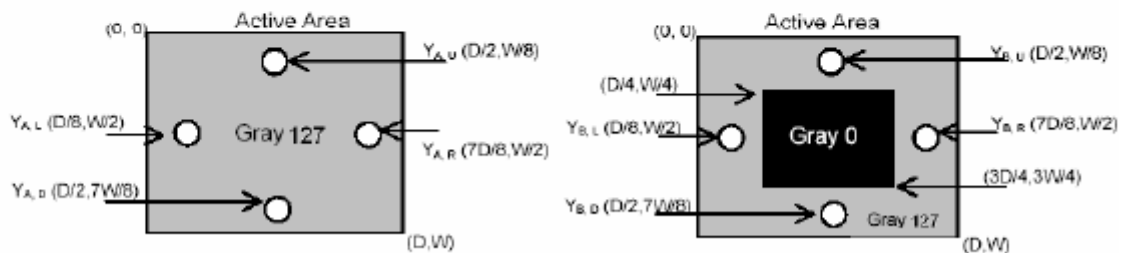
Note 5: Definition of Cross Talk (CT)

$$CT = |YB - YA| / YA \times 100 (\%)$$

Where

YA = Luminance of measured location without gray level 0 pattern (cd/m2)

YB = Luminance of measured location with gray level 0 pattern (cd/m2)

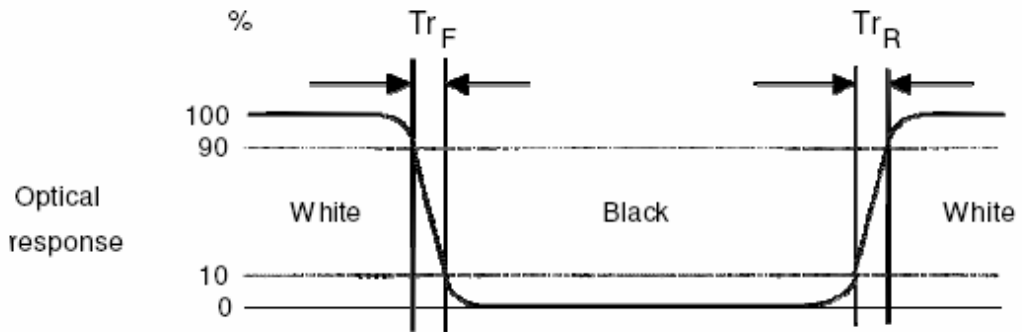




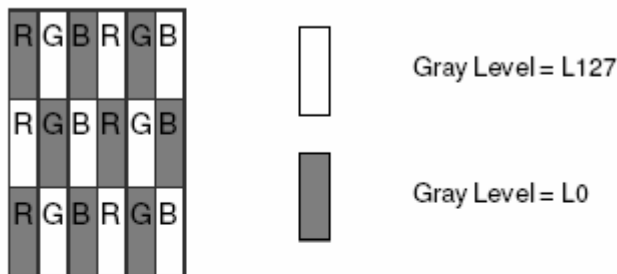


Note 6: Definition of response time:

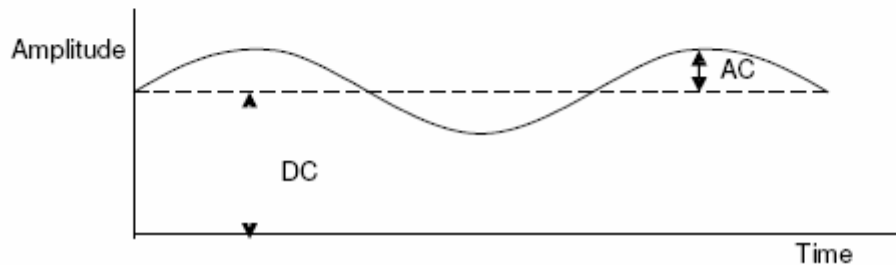
The output signals of photo detector are measured when the input signals are changed from "Full Black" to "Full White" (rising time), and from "Full White" to "Full Black" (falling time), respectively. The response time is interval between the 10% and 90% of amplitudes. Please refer to the figure as below.



Note 7: Subchecker Pattern



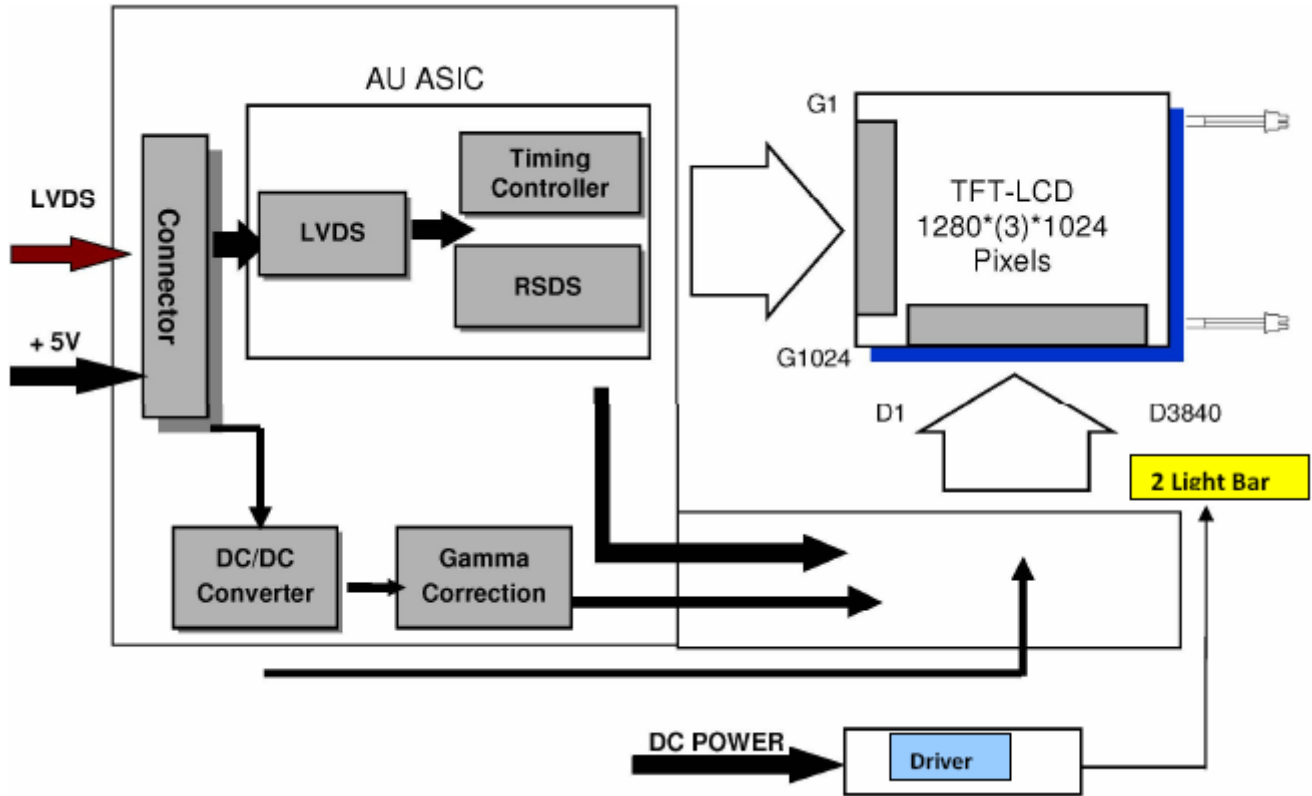
Method: Record dBV & DC value with (WESTAR)TRD-100





### 3. Functional Block Diagram

The following diagram shows the functional block of the 17.0 inch color TFT-LCD module :



PCBA Connector:  
 JAE FI-XB30SSL-HF15  
 Or Compatible

LED Driver Connector:  
 S7B-PH-SM4-TB  
 Or Compatible



## 4. Absolute Maximum Ratings

Absolute maximum ratings of the module is as following:

### 4.1 TFT LCD Module

Item	Symbol	Min	Max	Unit	Conditions
Logic/LCD Drive Voltage	VIN	-0.3	6	[Volt]	Note 1,2

### 4.2 Backlight Unit

Item	Symbol	Min	Max	Unit	Conditions
LED Forward Current	$I_F$	-	530	[mA]	Note 1,2

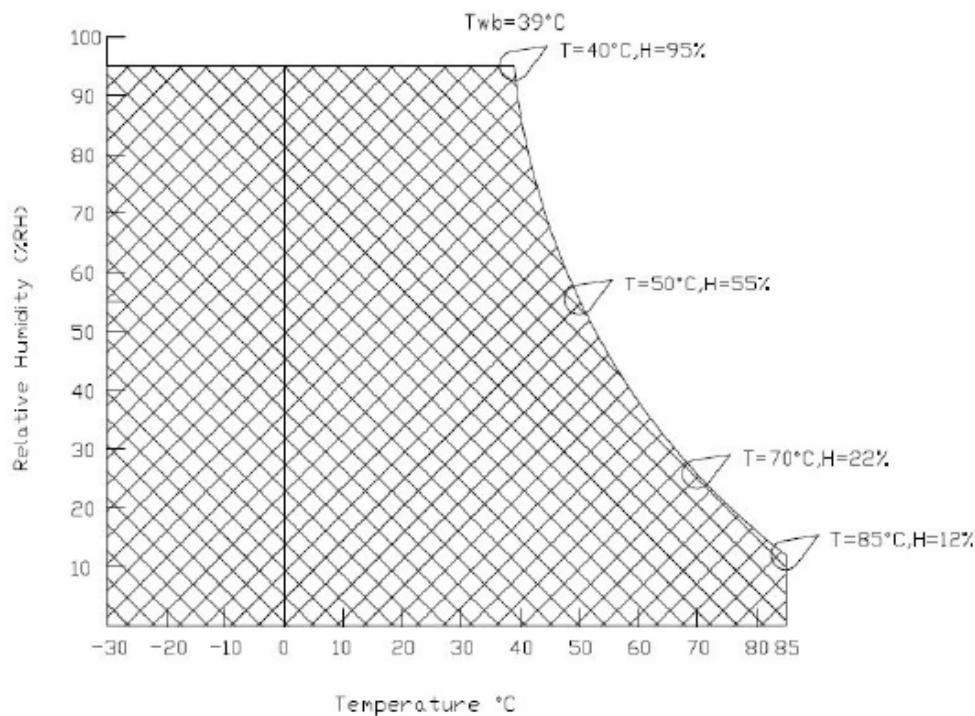
### 4.3 Absolute Ratings of Environment

Item	Symbol	Min	Max	Unit	Conditions
Operating Temperature	TOP	-30	+70	[°C]	Note 3
Operation Humidity	HOP	8	90	[%RH]	
Storage Temperature	TST	-30	+85	[°C]	
Storage Humidity	HST	8	90	[%RH]	

Note 1: With in Ta (25 °C)

Note 2: Permanent damage to the device may occur if exceed maximum values

Note 3: For quality performance, please refer to AUO IIS (Incoming Inspection Standard).





## 5. Electrical Characteristics

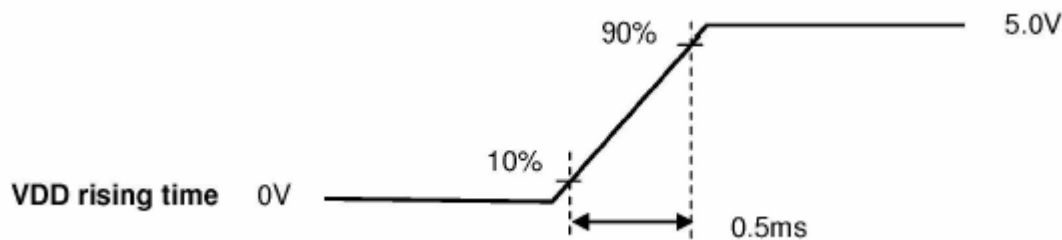
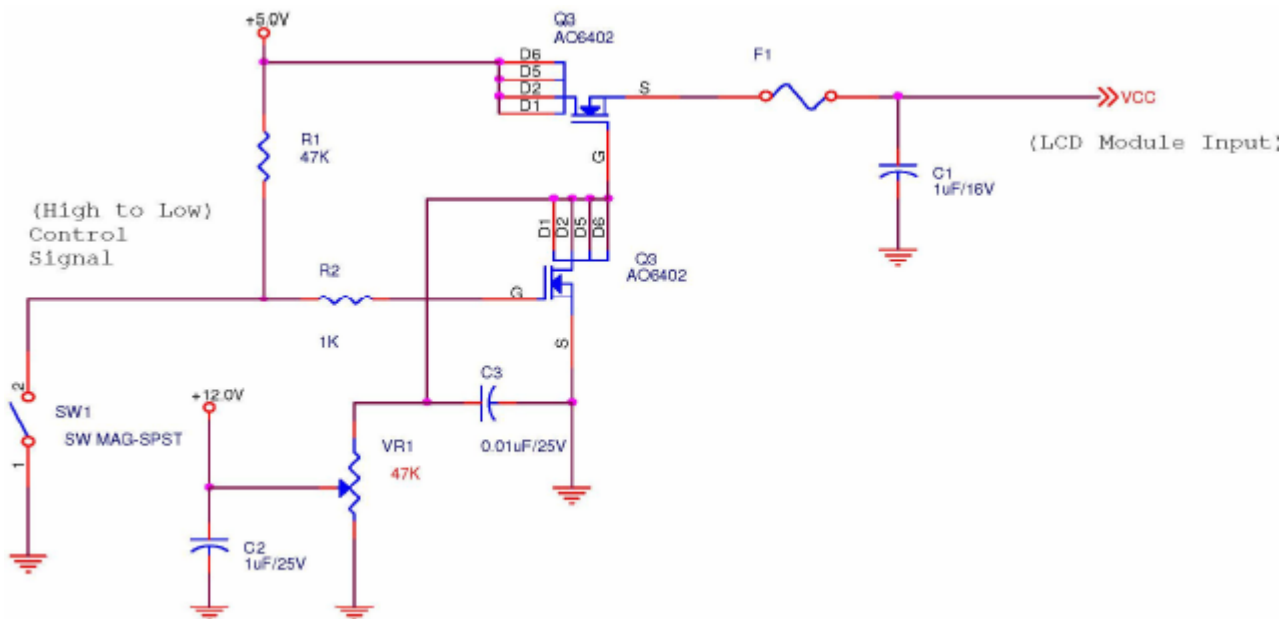
### 5.1 TFT LCD Module

#### 5.1.1 Power Specification

Input power specifications are as follows:

Symbol	Parameter	Min.	Typ.	Max.	Unit	Condition
VCC	Logic/LCD Drive Voltage	4.5	5.0	5.5	[Volt]	±10%
ICC	Input Current	-	1.05	1.16	[A]	Vin=5V , All Black Pattern, at 75Hz
Irush	LCD Inrush Current			3.0	[A]	Note
PCC	VCC Power	-	5.25	5.8	[Watt]	Vin=5V , All Black Pattern, at 75Hz
VCCrp	Allowable Logic/LCD Drive Ripple Voltage	-	-	200	[mV] p-p	With panel loading

Note 1: Measurement condition:





### 5.1.2 Signal Electrical Characteristics

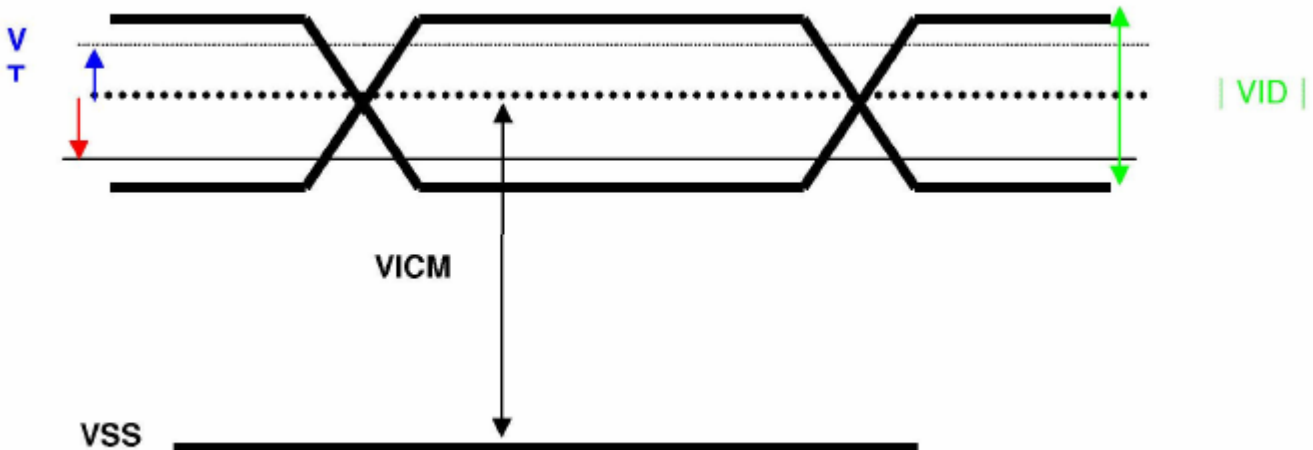
Input signals shall be low or Hi-Z state when Vin is off

It is recommended to refer the specifications of SN75LVDS82DGG (Texas Instruments) in detail.

Each signal characteristics are as follows;

Symbol	Parameter	Min	Typ	Max	Units	Condition
VTH	Differential Input High Threshold	-	-	+100	[mV]	VICM = 1.2V Note
VTL	Differential Input Low Threshold	-100	-	-	[mV]	VICM = 1.2V Note
VID	Input Differential Voltage	100	400	600	[mV]	Note
VICM	Differential Input Common Mode Voltage	+1.0	+1.2	+1.5	[V]	VTH/VTL = ±100mV Note

Note: LVDS Signal Waveform





## 5.2 Backlight Unit

### 5.2.1 Parameter guideline for LED

Following characteristics are measured under stable condition at 25°C (Room Temperature).

Symbol	Parameter	Min.	Typ.	Max.	Unit	Remark
V <sub>CC</sub>	Input Voltage	10.8	12	15	Volt	
I <sub>VCC</sub>	Input Current	-	1.61	-	A	100% Dimming
P <sub>VCC</sub>	Power Consumption	-	19.32	-	Watt	100% Dimming
F <sub>PWM</sub>	PW M Dimming Frequency	200	-	20K	H	Note 1,2
V <sub>PWM DIM</sub>	Dimming Voltage	3.3	5	-	Volt	
D <sub>PWM</sub>	Dimming Duty Cycle	10	-	100	%	
I <sub>F</sub>	LED Forward Current	-	530	-	mA	Ta = 25
V <sub>F</sub>	LED Forward Voltage		35.66		Volt	Note 3, 4
		-	-	0.4	Volt	
P <sub>LED</sub>	Power Consumption		18.90		Watt	IF=530 Ma, Ta=25C
Operating Lifetime		50000			Hrs	Note 5, 6

Note 1: PWM dimming function can be operated by PWM signal. PWM duty cycle can adjust white Luminance.

(PWM High: ON and PWM Low: OFF)

Note 2: PWM signal can not be floating and pull-down to ground when waiting.

Note 3: Enable (V<sub>LED On/Off</sub>) must be turned on late than V<sub>LED</sub> and PWM Signal.

Note 4: Enable (V<sub>LED On/Off</sub>) must be turned off early than V<sub>LED</sub> and PWM Signal.

Note 5: If ED170S03 V5 module is driven by high current or at high ambient temperature & humidity condition.

The operating life will be reduced.

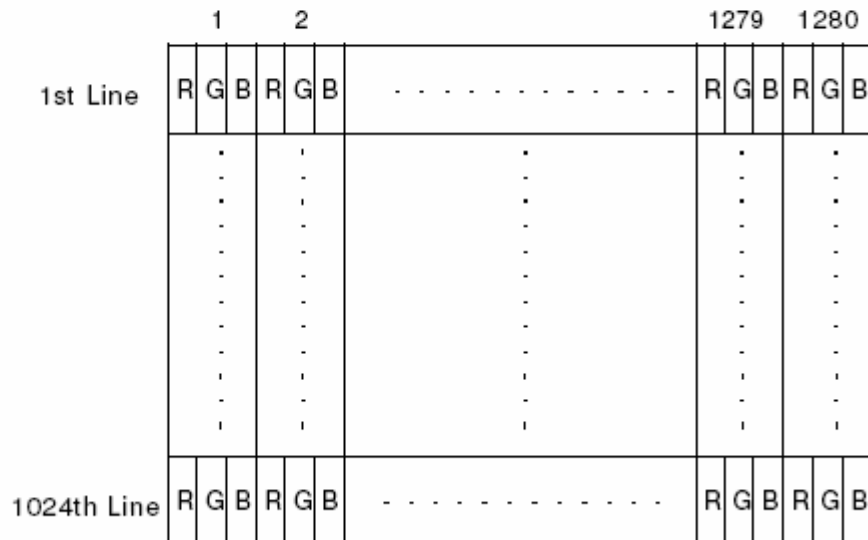
Note 6: Operating life means brightness goes down to 50% initial brightness. Minimum operating life time is estimated data.



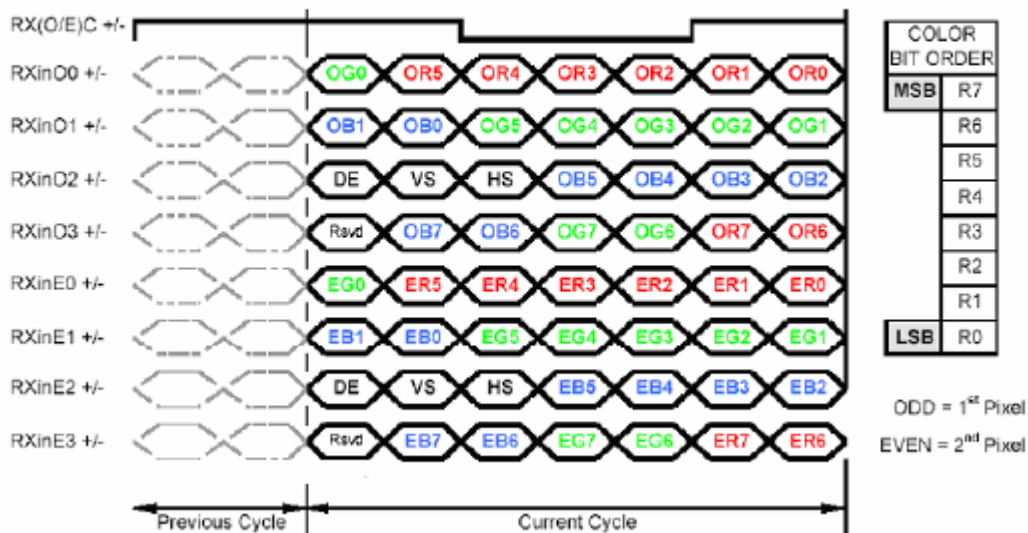
## 6. Signal Characteristic

### 6.1 Pixel Format Image

Following figure shows the relationship of the input signals and LCD pixel format.



### 6.2 The Input Data Format



Note1: Normally, DE, VS, HS on EVEN channel are not used.

Note2: Please follow PSWG.

Note3: 8-bit in





### 6.3 Signal Description

The module using a pair of LVDS receiver SN75LVDS82(Texas Instruments) or compatible. LVDS is a differential signal technology for LCD interface and high speed data transfer device. Transmitter shall be SN75LVDS83(negative edge sampling) or compatible. The first LVDS port(RxOxxx) transmits odd pixels while the second LVDS port(RxExxx) transmits even pixels.

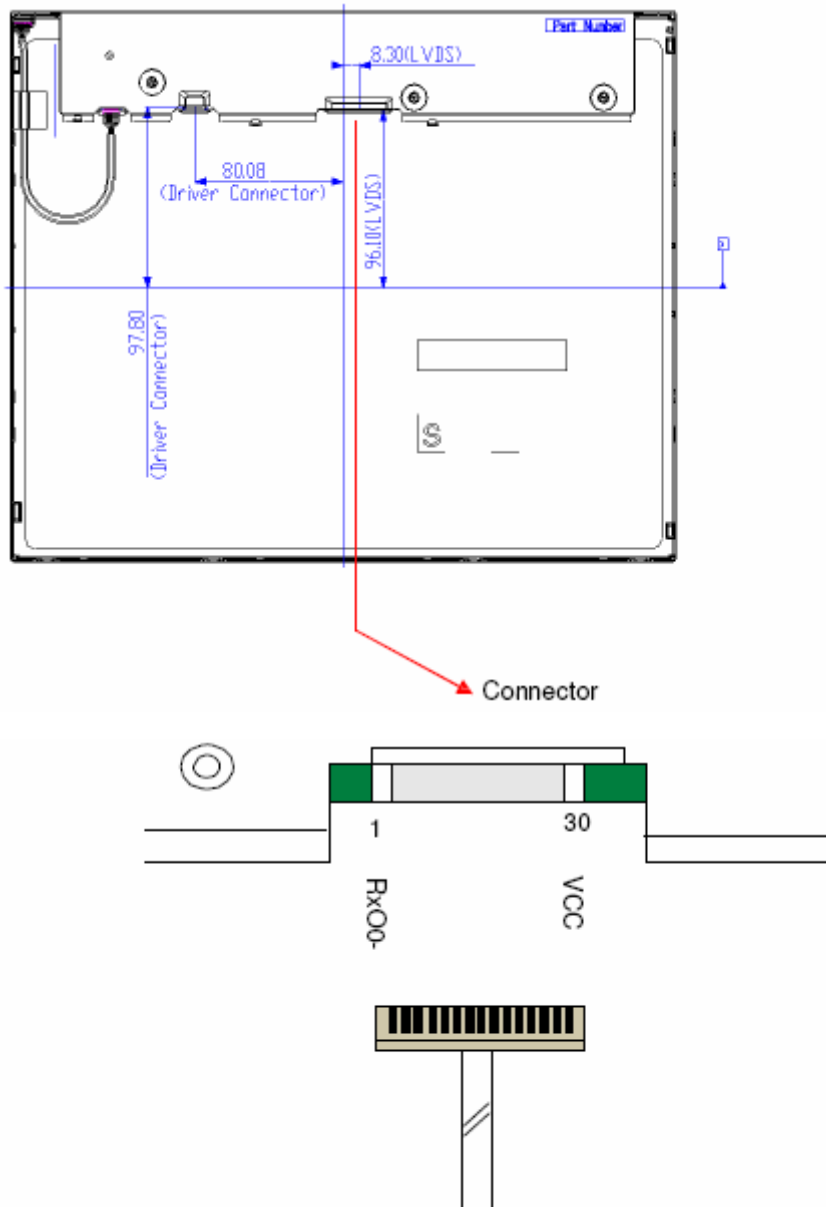
PIN#	SIGNAL NAME	DESCRIPTION
1	RxO0-	Negative LVDS differential data input (Odd data)
2	RxO0+	Positive LVDS differential data input (Odd data)
3	RxO1-	Negative LVDS differential data input (Odd data)
4	RxO1+	Positive LVDS differential data input (Odd data)
5	RxO2-	Negative LVDS differential data input (Odd data,H-sync, V-sync,DSPTMG)
6	RxO2+	Positive LVDS differential data input (Odd data)
7	GND	Power ground
8	RxOC-	Negative LVDS differential data input (Odd data)
9	RxOC+	Positive LVDS differential data input (Odd data)
10	RxO3-	Negative LVDS differential data input (Odd data)
11	RxO3+	Positive LVDS differential data input (Odd data)
12	RxE0-	Negative LVDS differential data input (Even data)
13	RxE0+	Positive LVDS differential data input (Even data)
14	GND	Power ground
15	RxE1-	Negative LVDS differential data input (Even data)
16	RxE1+	Positive LVDS differential data input (Even data)
17	GND	Power ground
18	RxE2-	Negative LVDS differential data input (Even data)
19	RxE2+	Positive LVDS differential data input (Even data)
20	RxEC-	Negative LVDS differential data input (Even data)
21	RxEC+	Positive LVDS differential data input (Even data)
22	RxE3-	Negative LVDS differential data input (Even data)
23	RxE3+	Positive LVDS differential data input (Even data)
24	GND	Power ground
25	GND	Power ground(for AUO Test aging+ HVS mode)
26	NC	No contact
27	GND	Power ground
28	VCC	+5V Power supply





29	VCC	+5V Power supply
30	VCC	+5V Power supply

Note1: Start from left side



Note2: Input signals of odd and even clock shall be the same timing.

Note3: Please follow PSWG.



## 6.4 Interface Timing

### 6.4.1 Timing Characteristics

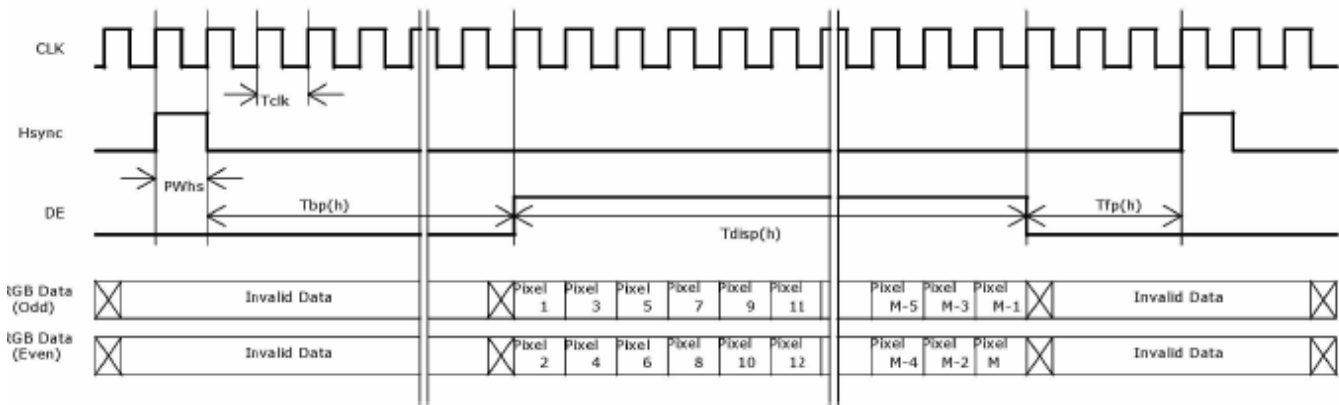
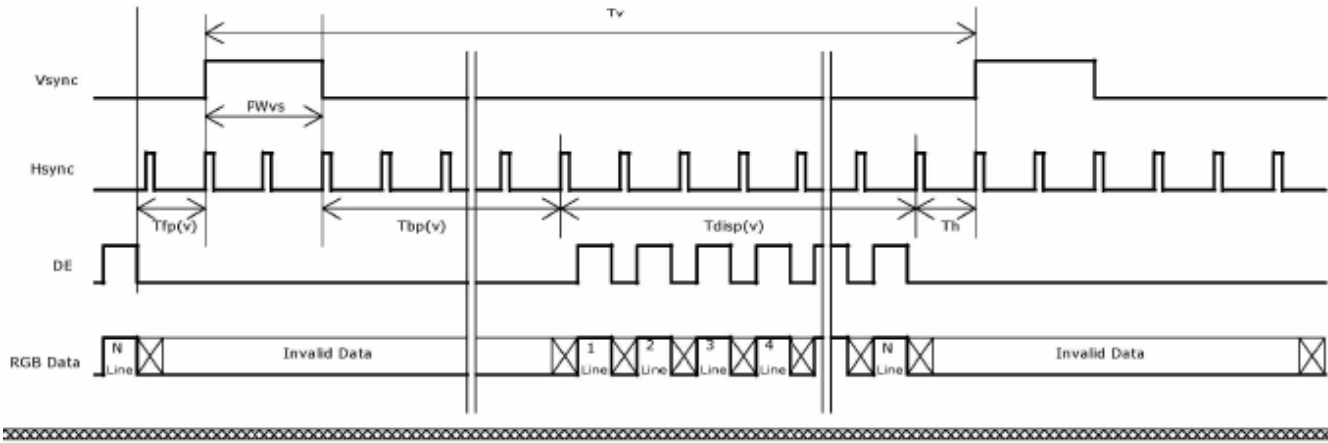
Basically, interface timings described here is not actual input timing of LCD module but output timing of SN75LVDS82DGG (Texas Instruments) or equivalent.

Signal	Item	Symbol	Min	Typ	Max	Unit
Vertical Section	Period	Tv	1034	1066	2048	Th
	Active	Tdisp(v)	1024	1024	1024	Th
	Blanking	Tbp(v)+Tfp(v)+PWvs	10	42	1024	Th
Horizontal Section	Period	Th	750	844	2048	Tclk
	Active	Tdisp(h)	640	640	640	Tclk
	Blanking	Tbp(h)+Tfp(h)+PWhs	110	204	1408	Tclk
Clock	Period	Tclk	14.81	18.52	25	ns
	Frequency	Freq	40	54	70	MHz
Frame rate	Frame rate	F	49	60	76	Hz

**Note :** DE mode only



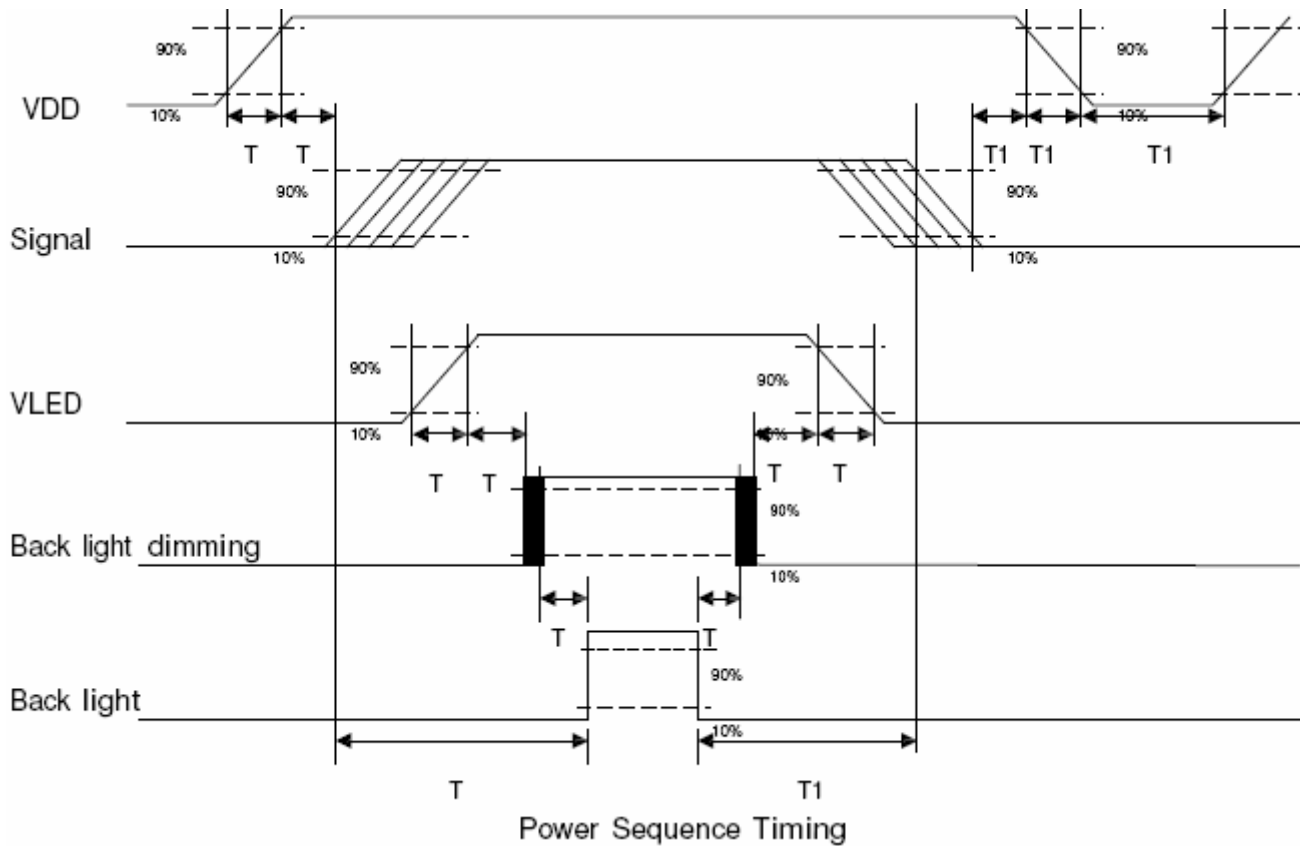
### 6.4.2 Input Timing Diagram





### 6.5 Power ON/OFF Sequence

VDD power and lamp on/off sequence is as follows. Interface signals are also shown in the chart. Signals from any system shall be Hi-Z state or low level when VDD is off.



Power Sequence Timing

Parameter	Value			Unit
	Min.	Typ.	Max.	
T1	0.5	-	10	[ms]
T2	30	40	50	[ms]
T3	200	-	-	[ms]
T4	0.5	-	10	[ms]
T5	10	-	-	[ms]
T6	10	-	-	[ms]
T7	0	-	-	[ms]
T8	10	-	-	[ms]
T9	-	-	10	[ms]
T10	110	-	-	[ms]
T11	0	16	50	[ms]



**FORENEX**

TEL: 886-4-22969886 FAX : 886-4-22969887

Forenex Technology Co., Ltd 5F-2, No212, Sec.4, Wenxin Rd., North Dist, Taichung City 404, Taiwan(R.O.C.)

T12	-	-	10	[ms]
T13	1000	-	-	[ms]



## 7. Connector & Pin Assignment

Physical interface is described as for the connector on module. These connectors are capable of accommodating the following signals and will be following components.

### 7.1 TFT LCD Module

#### 7.1.1 LVDS Connector

Connector Name / Designation	Signal Connector
Manufacturer	JAE or Compatible
Connector Model Number	FI-XB30SSL-HF15 or Compatible
Mating Housing Part Number	JAE FI-X30HL or Compatible

### 7.2 LED Backlight Unit: LED Driver Connector

Physical interface is described as for the connector on module. These connectors are capable of accommodating the following signals and will be following components.

Connector Name / Designation	LED Light Bar Connector
Manufacturer	
Connector Model Number	A20D/HD2-2P
Mating Model Number	S2B-PH-SM4-TB

#### 7.2.1 Signal for LED light bar connector

Pin no.	Symbol	Cable Color	Function
1	HV	Red	LED High Voltage
2	LV	Black	Ground

- ◆ Cable length: 250 ± 5 mm
- ◆ Connector-output position: right side (front view)
- ◆ LED light bar assembly design shall be easy for replacement and repair



### 7.3 LED Driver Board

#### 7.3.1 Input connector : J1

Model Name : S7B-PH-SM4-TB(JST)

**(J1)**

Connector Type: 2.0mm 7pin Wafer (SMD)

Pin No.	Description
1	+12V
2	+12V
3	+12V
4	Ground
5	PWM Control
6	Ground
7	ON/OFF Control



(pin1)

#### 7.3.2 Output connector : J2 , J3

Model Name : S2B-PH-SM4-TB(JST)

**(J2)**

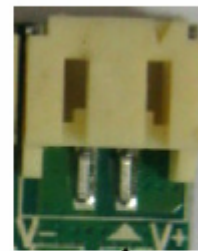
Connector Type: 2.0mm 2pin Wafer (SMD)

Pin No.	Description
1	VLED+
2	VLED-

**(J3)**

Connector Type: 2.0mm 2pin Wafer (SMD)

Pin No.	Description
1	VLED+
2	VLED-

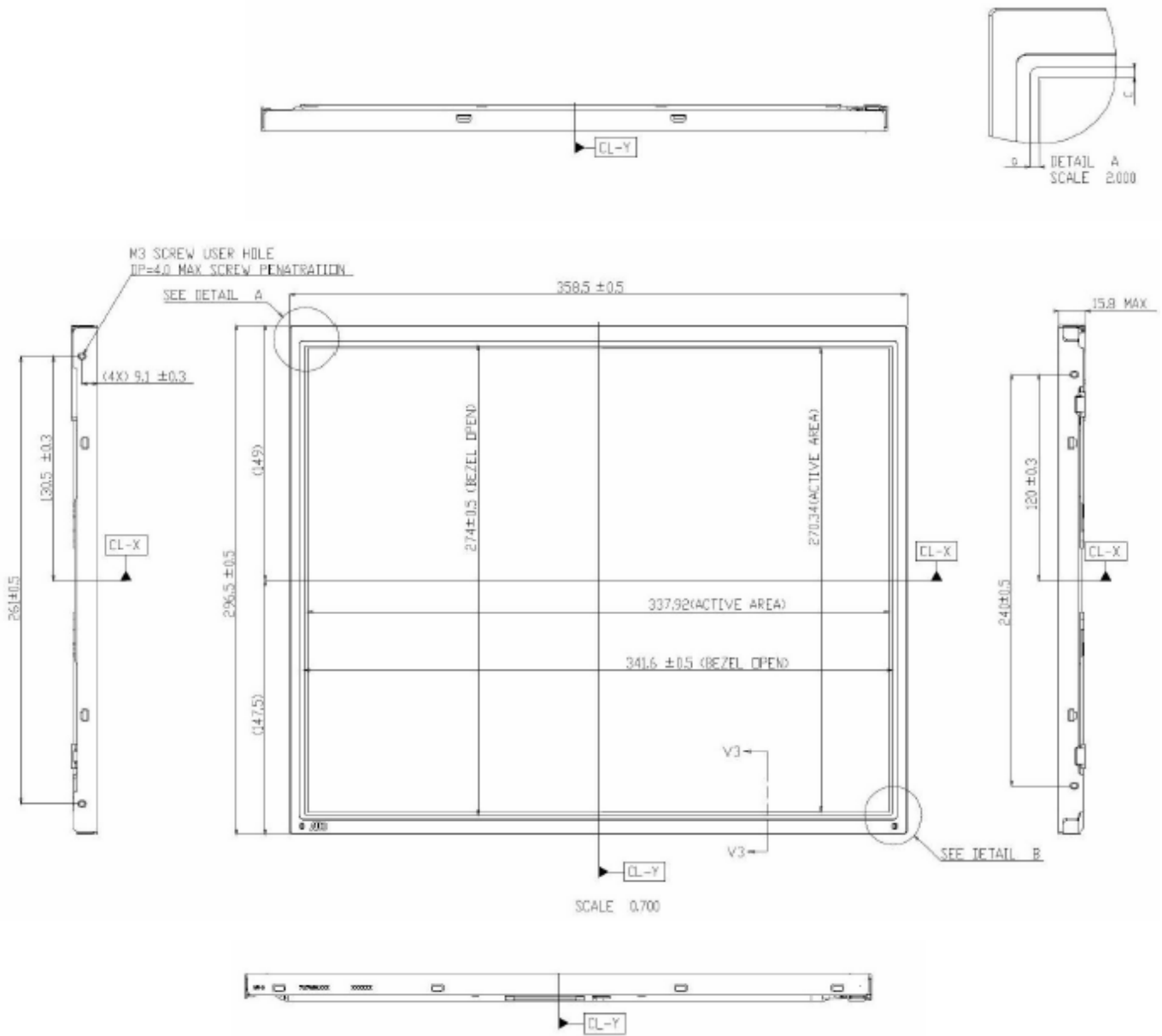


(pin1)

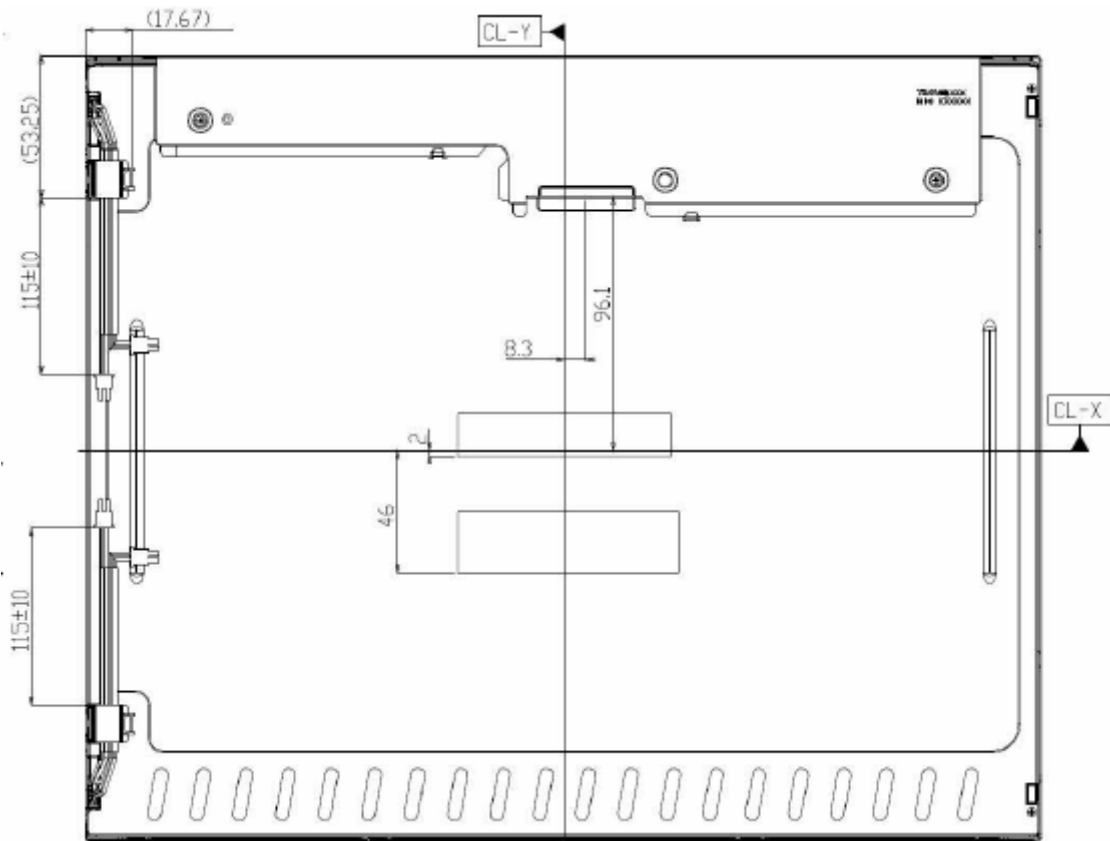


### 8. Mechanical Characteristic

#### 8.1 LCM Outline Dimension (Front View)



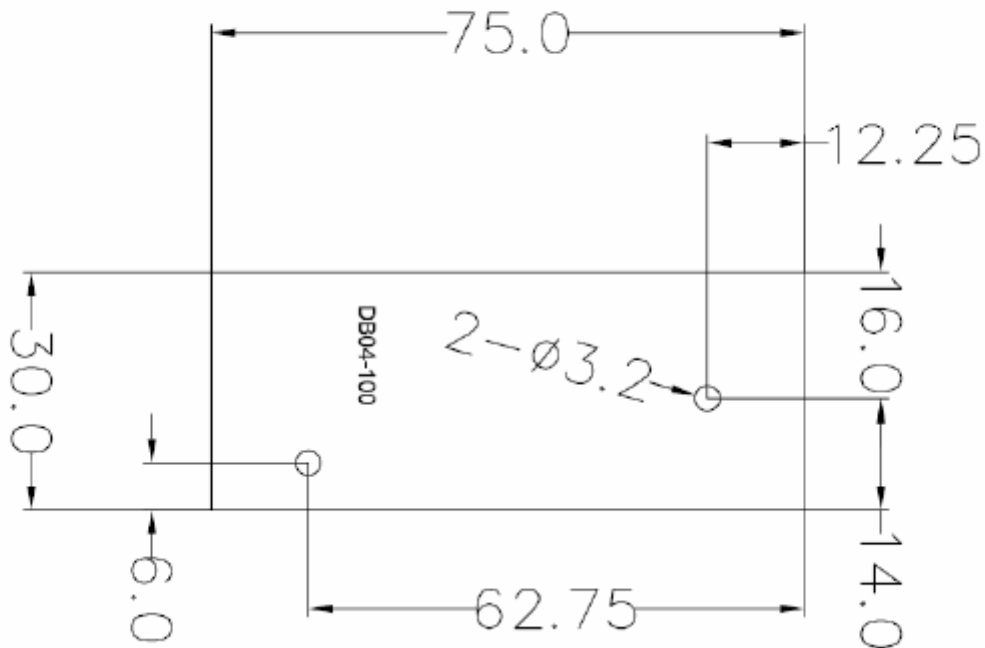






8.3 LED Driver Board Outline Dimension

Dimension : 75(L)\*30(W)\*8.65(H)mm





### 9. Reliability Test Criteria

Item	Required Condition	Note
Temperature Humidity Bias (THB)	Ta= 50°C, 80%RH, 300hours	
High Temperature Operation (HTO)	Ta= 85°C, 300hours	
Low Temperature Operation (LTO)	Ta= -30°C, 300hours	
Vibration Test (Non-operation)	Acceleration: 1.5 G Wave: Random Frequency: 10 - 200 - 10 Hz Sweep: 30 Minutes each Axis (X, Y, Z)	
Shock Test (Non-operation)	Acceleration: 50 G Wave: Half-sine Active Time: 20 ms Direction: ±X, ±Y, ±Z (one time for each Axis)	