



FORENEX

TEL: 886-4-22969886 FAX : 886-4-22969887

Forenex Technology Co., Ltd 5F-2, No212, Sec.4, Wenxin Rd., North Dist, Taichung City 404, Taiwan(R.O.C.)

FBA1260D41

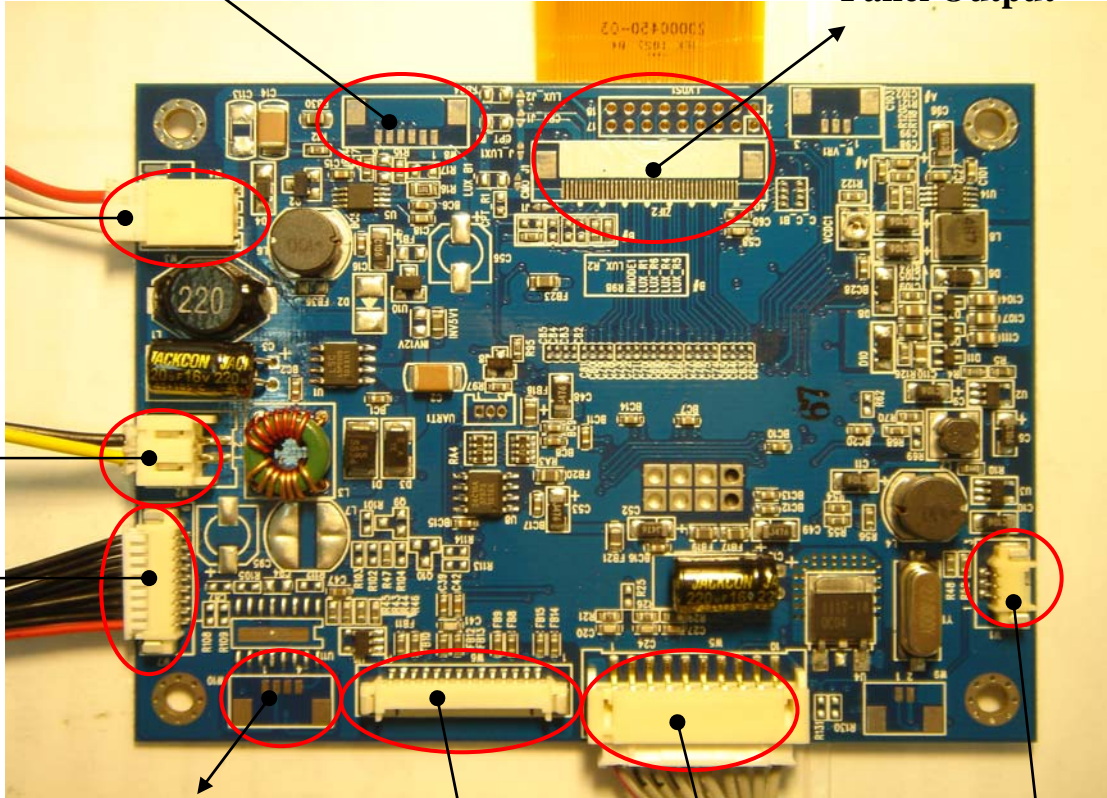
Ext. Backlight
Conn

Panel Output

Int. Backlight
Conn

DC Input

Keypad
Input

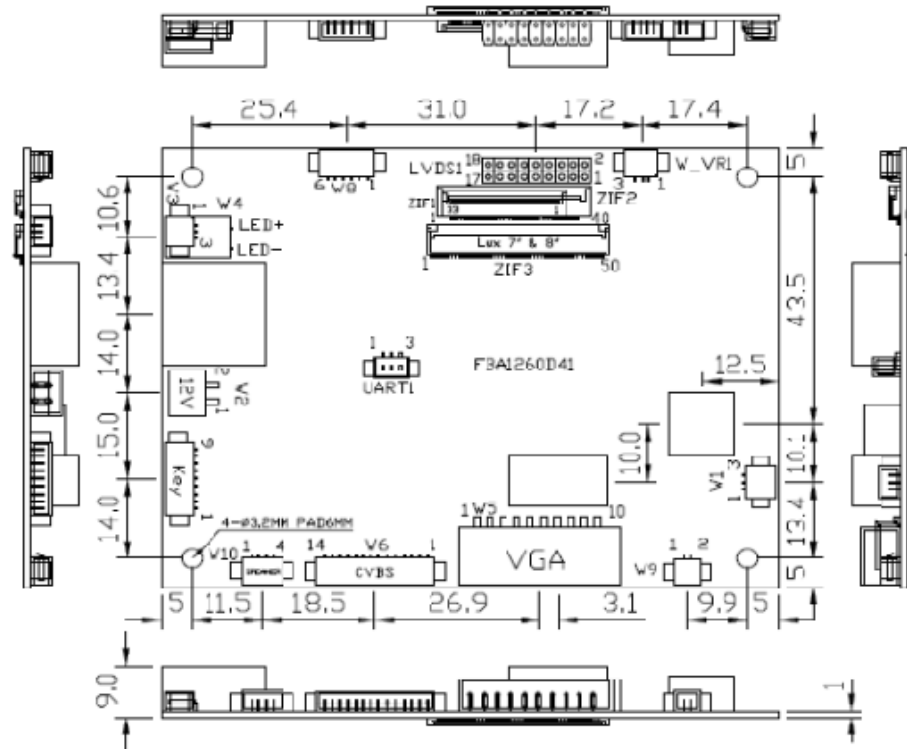


Speaker
Option

CVBS Input

PC Input

ISP Conn



Specification



A/D Board Number		FBA1260D41
Panel Type	Resolution	Max. 1280 × 1024
	Interface Type	TTL/ LVDS_18/24bit
	Power voltage	3.3V
Input Signal	PC Input 0.7Vp-p	CGA, EGA, ~ max. SXGA
	Video Input 0.7Vp-p	CVBS × 2, S_ Video, PAL/NTSC/SECAM
Input connector	PC Input	JST_2.0mm_10PIN
	Video Input	JST_1.25mm_14PIN
Sound Input (Option)		Stereo
Sound Output (Option)	building	Stereo Amplifier 2W/4Ω
Power Input		DC 12V / 1A (Wafer)
EDID		VESA DDC2B
F/R Control Button	Keypad / IR (NEC)	Power , Menu , Hot key , Inc , Dec
OSD Menu		Brightness , Contrast , H/V Position, Color , Phase , Clock
Power consumption		3.6W
Storage Temperature		-30°C ~ 130°C
Operating Temperature		0°C ~ 80°C
Custom Function (Option)		Auto_ CCD · Auto_ Tune · Auto_ Dimmer · Light_ Sensor
Dimension		101 mm (W) × 77 mm 6(L) × 9 mm (D)
Adaptive Panel		<u>ZIF1: TTL_18bit with ZIF33p-0.5mm</u> <u>ZIF2: TTL_18bit with ZIF40p-0.5mm</u> <u>ZIF3: TTL_24bit with ZIF50p-0.5mm</u> <u>LVDS1: LVDS_18/24bit with Header 2x9p</u> AUO: A070VW04_V4, A080SN01_V5, A104SN03_V1 Innolux: A070TN83/84, A070TN94, A080TN52_V1/3 CMO: LW700AT9003 PVI, AUO, Toshiba, CPT etc.,